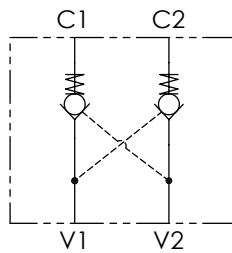


Hydraulic circuit



**Technical data**

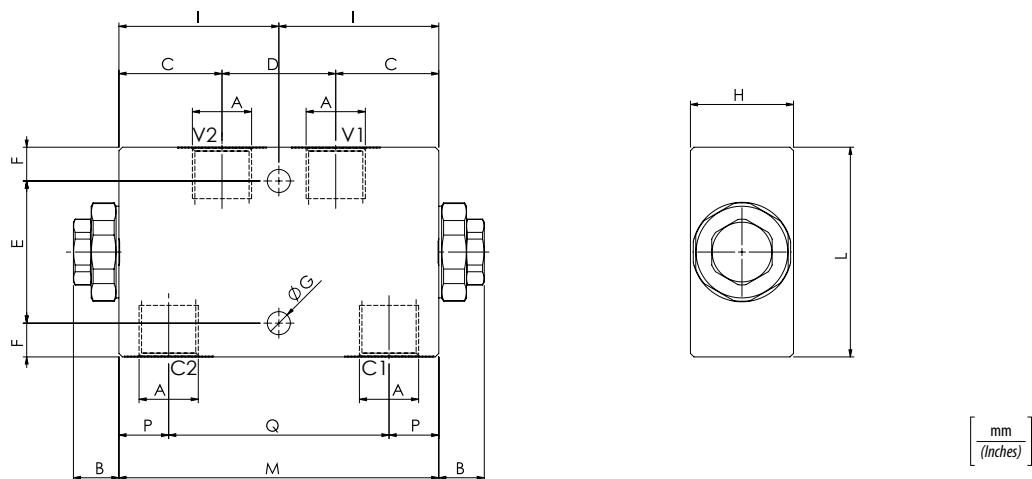
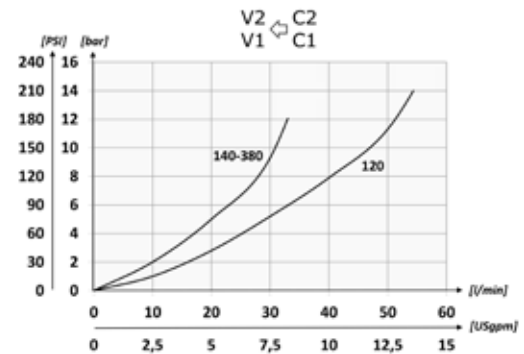
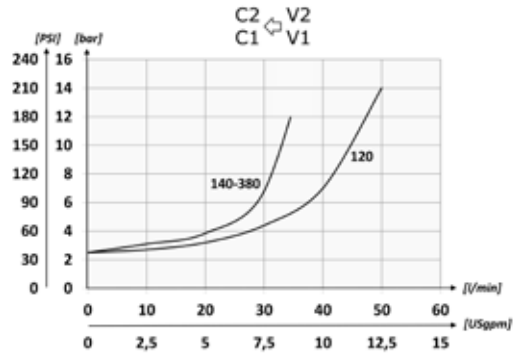
Mineral oil	ISO 6743/4 (DIN 51524)		
Oil viscosity	15-250 mm <sup>2</sup> /s (15 to 250 cSt)		
Max contamination index with filter	ISO 4406:1999 Classe 19/17/14		
Oil temperature	-20°C +80°C	-4°F + 176°F	
Ambient temperature	-20°C +50°C	-4°F + 122°F	
It is necessary a filter use to protect the valve (advised filtration 15 µm)			
Max leakage	0,015 in <sup>3</sup> /min - 5 drops/min		

Ordering code

01	02
<b>VRDL</b>	

<b>01</b>	Double acting pilot check valves	<b>VRDL</b>
<b>02</b>	Size	BSPP 1/4 <b>140N</b>
		BSPP 3/8 <b>380N</b>
		BSPP 1/2 <b>120N</b>

Performances



Technical characteristics

Type	A	Max flow l/min-USgpm	Max pressure bar/PSI	B	C	D	E	F	G	H	I	L	M	P	Q	Approx weight kg/lb	Pilot ratio
<b>VRDL140N</b>	<b>BSPP 1/4</b>	35 (9.2)	350 (5075)	13	29	32	40	9,5	6,5	29	45	59	90	14	62	1,18 (2.60)	1:7
<b>VRDL380N</b>	<b>BSPP 3/8</b>			(0.51)	(1.14)	(1.26)		(1.57)	(0.37)	(0.26)	(1.14)	(1.77)	(2.32)	(3.54)	(0.55)	(2.44)	
<b>VRDL120N</b>	<b>BSPP 1/2</b>	50 (13.2)		14,8	38	34	14,5	8,5	34	55	69	110	20,5	69	1,77 (3.90)		
				(0.58)	(1.50)	(1.34)		(0.57)	(0.33)	(1.34)	(2.17)	(2.72)	(4.33)	(0.81)	(2.72)		